

# Preparing all English Language Learners (ELLs) and Multilingual Learners (MLLs) for Success

---

2022-2023

Michelle Pineda  
Director of Bilingual Education and  
World Languages  
[mpineda@hempsteadschools.org](mailto:mpineda@hempsteadschools.org)  
516-434-4154

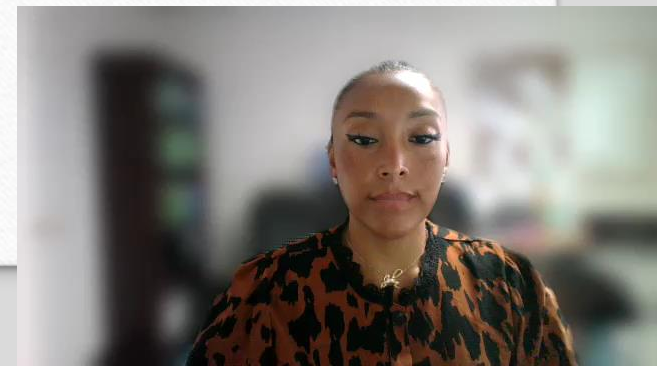




# Vision Statement

---

- The Hempstead Union Free School District will challenge every multilingual learner (MLL) to develop a command of literacy in the home language, the English language, and other World Languages to meet the demands of a global society. Multilingual learners will become inquirers, knowledgeable thinkers, communicators, principled, open-minded, caring, risk takers, balanced and reflective students.



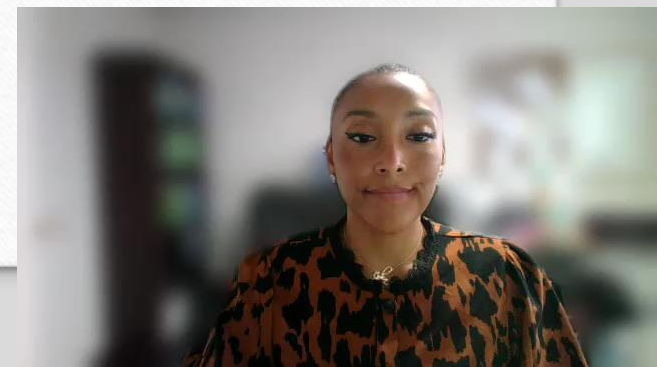
# Program Structure

---

One-Way Dual  
Language

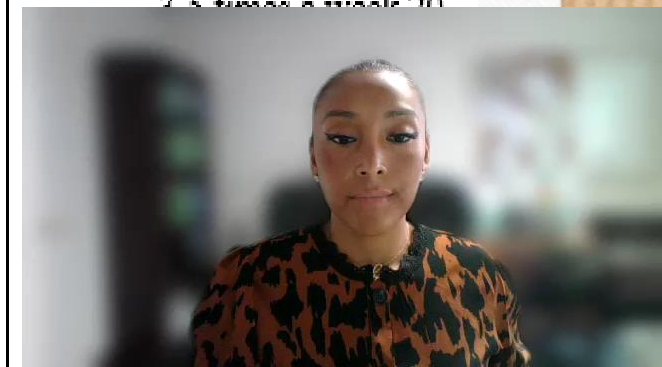
Transitional  
Bilingual  
Education (TBE)

English as a New  
Language (ENL)



# One-Way Dual Language

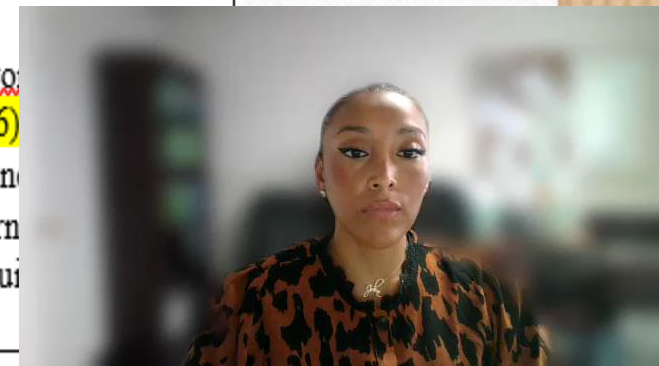
Home Language Arts	English language Arts	Math	Intervention	Other
<ul style="list-style-type: none"><li>▪ Interdisciplinary Instruction:<ul style="list-style-type: none"><li>-<u>MiVision</u></li><li>-HLA Curriculum Maps</li></ul></li><li>▪ Phonics (Spanish):<ul style="list-style-type: none"><li>-<u>Estrellita</u></li></ul></li></ul>	<ul style="list-style-type: none"><li>• Interdisciplinary Instruction:<ul style="list-style-type: none"><li>-<u>MyView</u></li><li>-Integrated ENL/ELA Curriculum Maps</li><li>-UOI</li></ul></li></ul>	<ul style="list-style-type: none"><li>• Eureka</li></ul>	<ul style="list-style-type: none"><li>• Spanish:<ul style="list-style-type: none"><li>-<u>Intervenciones Tempranas</u> Grades 1-3</li></ul></li><li>• Renaissance Reading Toolbox (L1, L2)</li><li>• Renaissance Math Toolbox (L1, L2)</li></ul>	<ul style="list-style-type: none"><li>• SEL:<ul style="list-style-type: none"><li>-7Mindsets or Leader in Me</li></ul></li><li>• English Language Development:<ul style="list-style-type: none"><li>-Lexia English:<ul style="list-style-type: none"><li>-3 times a week</li><li>10-20 min</li></ul></li></ul></li><li>• Instructional Tool:<ul style="list-style-type: none"><li>-Freckle ELA</li><li>-Freckle Math<ul style="list-style-type: none"><li>2-5 times a week 20</li></ul></li></ul></li></ul>





# Transitional Bilingual Education Instructional Framework

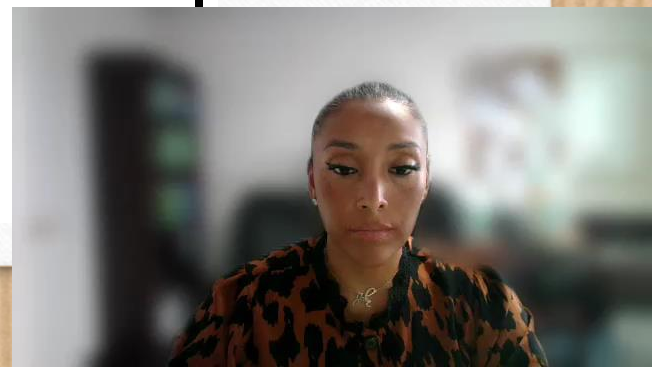
Home Language Arts	English language Arts	Math	Intervention	Other
<ul style="list-style-type: none"> <li>▪ Interdisciplinary Instruction: Grades (2-5): -<u>MiVision</u> -HLA Curriculum Map</li> <li>▪ Interdisciplinary Instruction Grade 6: -<u>MyPerspective</u> -HLA Curriculum map</li> </ul>	<ul style="list-style-type: none"> <li>• Interdisciplinary Instruction: 2-5 -<u>MyView</u> -Integrated ENL/ELA Curriculum Maps -UOI</li> <li>▪ Interdisciplinary Instruction Grade 6: -<u>MyPerspective</u> -Integrated ENL/ELA Curriculum map</li> <li>• UOI</li> </ul>	<ul style="list-style-type: none"> <li>• 2-6: Eureka</li> </ul>	<ul style="list-style-type: none"> <li>• English: -Corrective Reading Grades 4-6</li> <li>• Renaissance (2-6):<u>Reading</u> Toolbox (L1, L2)</li> <li>• Renaissance (2-6) Math Toolbox (L1, L2)</li> </ul>	<ul style="list-style-type: none"> <li>• SEL: (2-6) -7Mindsets or Leader in Me</li> <li>• English Language Development: (2-6) -Lexia English: -3 times a week 10-20 min</li> <li>• Instructional Tool (2-6) -Freckle ELA -Freckle Math -3-5 times a week 20 min. for each content area</li> <li>• <u>Myo</u> (2-6) As n learn inqui</li> </ul>



## 2-5

- Interdisciplinary Instruction: **K-5**
  - MyView
  - Integrated ENL/ELA Curriculum Maps
  - UOI
  
- Interdisciplinary Instruction **Grade 6:**
  - MyPerspective
  - Integrated ENL/ELA Curriculum map
- UOI

Additional Tools:  
Lexia English

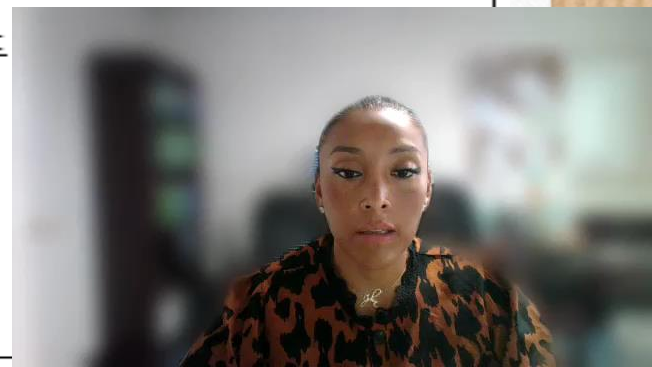


## Grades 7-8

HLA	ENL	World Languages
<ul style="list-style-type: none"> <li>• <u>Savvas: Abriendo Paso</u></li> </ul> <p><u>Supplemental:</u></p> <ul style="list-style-type: none"> <li>• <u>Esperanze Renace</u></li> <li>• <u>Cajas de Carton</u></li> <li>• <u>Que Tal?</u></li> <li>• <u>ENIL</u></li> <li>• <u>Newsela</u></li> <li>• <u>myON</u></li> </ul>	<ul style="list-style-type: none"> <li>• IB MYP Curriculum Maps</li> </ul> <p><u>Supplemental:</u></p> <ul style="list-style-type: none"> <li>• <u>StoryWorks</u></li> <li>• <u>Scope</u></li> <li>• <u>iLitELL</u></li> <li>• <u>Newsela</u></li> <li>• <u>myON</u></li> </ul> <p><b>Student Independent Practice:</b></p> <ul style="list-style-type: none"> <li>• Lexia English: 3-5 times a week 15-20 min.</li> <li>• Renaissance: 3-5 times a week 15-20 min</li> </ul>	<ul style="list-style-type: none"> <li>• <u>Spanish: Autentico</u></li> <li>• <u>French: Bleu, Blanc, Rouge</u></li> </ul> <p><u>Supplemental:</u></p> <ul style="list-style-type: none"> <li>• <u>Spanish: Realidades</u></li> <li>• <u>French: Allons-y</u></li> <li>• <u>Newsela</u></li> <li>• <u>myON</u></li> </ul>

## Grades 9-12

HLA	ENL	World Languages
<ul style="list-style-type: none"> <li>• <u>Edmentum-Espanol</u></li> <li>• <u>Espanol Santillana</u></li> </ul> <p><u>Supplemental:</u></p> <ul style="list-style-type: none"> <li>• <u>Herstory-Espanol</u></li> <li>• <u>myOn/myOn News</u></li> </ul>	<ul style="list-style-type: none"> <li>• <u>English 3D</u></li> <li>• <u>Edge</u></li> </ul> <p><u>Supplemental:</u></p> <ul style="list-style-type: none"> <li>• <u>Herstory</u></li> <li>• <u>myON/myOnNews</u></li> </ul> <p><b>Student Independent Practice:</b></p> <ul style="list-style-type: none"> <li>• Renaissance: 3-5 times a week 15-20 min</li> </ul>	<ul style="list-style-type: none"> <li>• <u>Realidades</u></li> </ul> <p><u>Supplemental:</u></p> <ul style="list-style-type: none"> <li>• </li> </ul>





# Renaissance

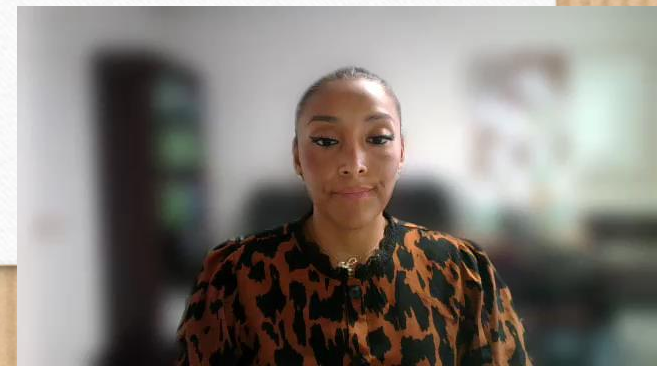
---

RENAISSANCE  
**Star** Assessments

RENAISSANCE  
+  
 nearpod

RENAISSANCE  
**myON**<sup>®</sup>

 **Freckle**  
by Renaissance





## English Language Learners and World Languages

### **\*Instructional Practices FLES Teachers Grades K-6**

- Will learn how to apply theories of second language learning to instruction at the elementary school level
- Design effective curriculum and instructional practice and assessment appropriate for world languages at the elementary school level.

- Culturally Responsive Pedagogy  
**Pineda**

### **\*Renaissance Assessment Tools Grades K-12**

- Teachers will learn how to analyze data reports of students' abilities in both languages
- Focus on the assets students bring to the classroom
- Raise expectations and make learning relevant for all students

## English Language Learners and World Languages

### **\*Estrellita**

#### **Grades K-2 One-Way Teachers**

- Increase student reading and writing abilities in Spanish
- Whole group and small group instruction
- Differentiation of instruction
- Learn classroom management and Spanish program phonics sequence

**Pineda**

#### **\*One-Way Dual Language K-2 Teachers**

- Navigating the transitional terrain
- How to support the successful implementation and sustainability of a One-Way Dual Language Program

**Pineda**

## English Language Learners and World Languages

### **\*Escalera**

#### **Grades 3-6 Teachers Newcomer SIFE instructors**

- Tier 3 Home Language Reading Support
- Small Group Instruction
- HLA literacy targeted skills

**Pineda**

#### **\*Lexia English ENL Teachers grades (K-6)**

- Small group instruction
- Station Rotation
- Incorporating Speaking, Listening, Reading and Writing

**Pineda**



<b>Vision and Mission Statement</b>	4
Terms	5-7
ELL Exit Criteria	8
<b>Opt-Out Protocol</b>	9
Checkpoints	10
Units of Study	11-14
<b>Blueprint</b>	15-19
Units of study Description	20
ELL Calendar	21
<b>District ELL Programs</b>	22-25
Department Parent Brochure	26-29
Parent Notification Letters	30
<b>Classroom Environment Expectations</b>	31
One-Way Dual Language Targeted Language Signs	32
Classroom Resources	33
<b>Print Rich Classroom Examples</b>	34-35
Bilingual Resource Centers	36
Assessing English Language Learners	37
<b>Assessment Guidelines</b>	38
Grading Guidelines and Sample Progress Monitoring Report Card	39-50
Integrated Co-Teaching	51
<b>Components for a Successful Co-Teaching Model</b>	52
Co-Teaching Models	53
Co-Teaching for ELLs-Weekly Planning Template	54
<b>Co-Teaching for ELLs Daily Lesson Planning Template</b>	55
Sample Report Card Comments for Students receiving ELL Services	56
NYS Testing Accommodations	57
<b>Language Objectives with Expressive Verbs and Specified Language Targets</b>	58
Dual Language Instructional Framework	59
Transitional Bilingual Education Instructional Framework	60
<b>One-Way Dual Language Sample Schedule</b>	61
Transitional Bilingual Education Sample Schedule	62
Bilingual & English as a New Language Instructional Models and Core Materials	63-64
<b>Accountable Language Stems</b>	65
Sample Check for Understanding Template	66
Instructional Tools and Assessments	67-68
<b>Intervention Tools</b>	69
HHS SIFE Support	70-71
ABGS SIFE Support	72
<b>Elementary Newcomer Student Support</b>	73
Daily Instructional Practices, Strategies, and Protocols for ELLs	74-77
Linguistic Can-Do Descriptors	78
<b>Professional Development</b>	79-80
Tools Description	81-82
MLL/ELL Instruction Classroom Observation Snapshot	83
<b>Translating and Interpreting Needs</b>	84
Propio Interpreting Services	85
BOCES Translation Partnership	86-87
<b>Frequently Asked Questions</b>	88-90





# Preparing all English Language Learners (ELLs) and Multilingual Learners (MLLs) for Success

---

2022-2023

Michelle Pineda  
Director of Bilingual Education and  
World Languages  
[mpineda@hempsteadschools.org](mailto:mpineda@hempsteadschools.org)  
516-434-4154

